



8th November 2024

Dear Parents and Carers,

I do hope you all had a restful break and managed to enjoy yourselves.

Welcome back to Term 2, which we know will be exceptionally busy! This term, all after school and lunchtime clubs will start next week.

First, a staffing update! Mrs Lisa Stephen (Teaching Assistant), has now started her maternity leave. Mrs Julie De Barros is now working full time as a Teaching Assistant across Year 4: welcome to Team Halling! Mrs Rachel Crittall (Pastoral Lead - Maternity Cover) and HLTA, has secured an Attendance Lead position at a school that is much closer to her home. We will be very sad to say goodbye to Mrs Crittall at the end of this term. Mrs Debbie Tyler (Pastoral Lead) will be returning from her Maternity Leave at the start of Term 4.

Early next week, your child's Year Group Newsletter will be added to the Class Page of the website [here](#).

Please click [here](#) for a link to our November Parent and Carer Survey. This will remain open for a week and will only take a matter of minutes! A separate letter has also been sent to you all today. Thank you in advance for taking part!

If you are coming to our Firework Spectacular tomorrow, we look forward to welcoming you. Tickets can be purchased on the night and if you have pre-purchased tickets, please don't forget to pop your wristbands on before arriving.

As always, if you have any questions please do catch me or a member of staff at the gate.

Best wishes,

Ms Lisa Taylor  
Headteacher



## Halling Primary School Diary Dates: Term 2



Day:	Event:	Additional Information:
Monday 4th November	First Day of Term 2	
Tuesday 5th November	MYG Basketball	• Year 5 & Year 6, details to follow
Tuesday 5th November	Individual and Sibling Photographs	• Details to follow
Tuesday 5th November	Medway & Kent Test Information Evening	• Year 5—5:00pm—Please arrive via the school hall
Saturday 9th November	Halling Fireworks Display	• Please purchase tickets on Arbor
Monday 11th November	Remembrance Assembly	• Children and staff only
wb: Monday 11th November	Anti-Bullying Week	• Choose RESPECT!
Tuesday 12th November	Odd Socks Day	• Details to follow
Tuesday 12th November	Parent & Carer Consultation Meetings	• 3:30pm until 7:00pm
Thursday 14th November	Parent & Carer Consultation Meetings	• 3:30pm until 6:00pm
Friday 15th November	BBC Children in Need Charity Fundraising Day	• Letter to follow from Mrs Nott and Halling's Communications Team
wb: Monday 18th November	UK Parliament Week	• Details to follow
Saturday 23rd November	PTA Christmas Photo Shoot	• Details to follow
Thursday 21st November	Class Assembly—Alpacas	• Please arrive at 9:00am via the school hall doors
Thursday 28th November	MYG Badminton	• Year 5 & Year 6



Day:	Event:	Additional Information:
Thursday 28th November	Class Assembly—Kookaburras	<ul style="list-style-type: none"> <li>Please arrive at 9:00am via the school hall doors</li> </ul>
Friday 29th November	PTA Fundraising: Bring a Gift Bag	<ul style="list-style-type: none"> <li>Letter to follow from PTA</li> </ul>
Wednesday 4th December	Rocksteady Christmas Concert	<ul style="list-style-type: none"> <li>Details to follow</li> </ul>
Monday 9th December	KS2 (Years 3-6) Christmas Celebration (Provisional)	<ul style="list-style-type: none"> <li>2:00pm @ St. John's Church - ticketed event</li> <li>Letter to follow from Mrs Nott</li> </ul>
Tuesday 10th December	KS2 (Years 3-6) Christmas Celebration (Provisional)	<ul style="list-style-type: none"> <li>10:00am @ St. John's Church - ticketed event</li> <li>Letter to follow from Mrs Nott</li> </ul>
Tuesday 10th December	EYFS Christmas Performance	<ul style="list-style-type: none"> <li>2:00pm @ School Hall - ticketed event</li> <li>Letter to follow from Mrs Coleman</li> </ul>
Wednesday 11th December	Year 1 Christmas Performance	<ul style="list-style-type: none"> <li>2:00pm @ School Hall - ticketed event</li> <li>Letter to follow from Ms Eakins</li> </ul>
Thursday 12th December	Year 2 Christmas Performance	<ul style="list-style-type: none"> <li>2:00pm @ School Hall - ticketed event</li> <li>Letter to follow from Ms Eakins</li> </ul>
Thursday 12th December	Save the Children Christmas Jumper Day	<ul style="list-style-type: none"> <li>Letter to follow from Ms Taylor</li> </ul>
Tuesday 17th December	PTA Fundraising: Christmas Disco	<ul style="list-style-type: none"> <li>Letter to follow from PTA</li> </ul>
Wednesday 18th December	Christmas Dinner Day	<ul style="list-style-type: none"> <li>Wear your Christmas Jumper!</li> </ul>
Thursday 19th December	Halling's Got Christmas Talent	<ul style="list-style-type: none"> <li>Details to follow</li> </ul>
Friday 20th December	Class Parties	<ul style="list-style-type: none"> <li>Details to follow</li> </ul>
Friday 20th December	Last Day of Term 2	<ul style="list-style-type: none"> <li>Early pick up from 1:30pm (optional)</li> </ul>
Friday 20th December	PTA Fundraising: Sleigh Run	<ul style="list-style-type: none"> <li>Letter to follow from PTA</li> </ul>
Monday 6th January	Staff Development Day	<ul style="list-style-type: none"> <li>Children DO NOT attend</li> </ul>
Tuesday 7th January	First Day of Term 3	



Why not follow us on Twitter (X) for regular updates?  
 @HallingSch @AletheiaAT @HallingPta



## School Ties for Years 3-6

School ties are available to purchase throughout the year via the 'Shop' in the Arbor App.

Mid Kent  
 Motorcycle Training  
 01622 720774



Saturday 9<sup>th</sup> November 2024

Halling Primary School

**FIREWORK  
SPECTACULAR**



**BURGERS**

**HOTDOGS**

**DRINKS**

**ICE CREAM**

**GLOWSTICKS**

Gates open at 17:30

Firework Display at 19:15

Adults: £7

Children (under 16): £4

Under 4s: Free



# ASDA Cashpot for Schools

## WE NEED YOU!

ASDA is running their Cashpot for Schools until **30/11/2024**. Every time you shop in ASDA and scan your shopping, we get some money! This comes from ASDA, **not from you**, so it's a win-win situation.

All you need to do is download the ASDA app and go to Cashpots. Scroll down to find the Cashpots for Schools banner and select your school of choice - you can only select one and cannot change it once selected).

We will share the total amount raised across the school once the scheme has expired.

Please tell aunties, uncles, grandparents, friends, neighbours and let's see how much we can raise!

[Cashpot for schools \(asda.com\)](https://asda.com/cashpot-for-schools)

**you scan,  
we DONATE  
££s TO  
SCHOOLS.**



## Asda Rewards Cashpot for Schools

[Cashpot for Schools Terms & Conditions](#)

[Asda Rewards terms & Conditions](#)

**1**

### Download and sign up to the Asda Rewards app

Opt into the Cashpot for Schools campaign and select a specific primary school or select 'Schools in Need'.

**2**

### Shop in store across Asda and George, or online at Asda.com

Asda will donate a percentage of your shop to your chosen school each time you shop and scan.

**3**

### Asda does the rest

The money raised will be donated through Parentkind to schools to spend on what they need most. This won't affect your own Cashpot earn.

**Once opted in and selected a school, we will add £1 to your chosen schools Cashpot to help get them started.**

Each school will get an additional £50 added to their Cashpot, after at least one customer has shopped and scanned their Rewards app.



# Harvest Festival

This term at Halling, we had a very special Harvest Festival assembly. We celebrated being thankful for the food we have and talked about the importance of giving to others.

Thank you to everyone who supported our chosen charity this year, 'Caring Hands'. As a school, we collected a huge amount of donations for this charity that will go towards feeding many people in need of a meal. We could not have done this without your generosity and support. Thank you all!

Miss Chinniah Seymour

RE Lead



**Caring Hands**  
in the community

**Halling Primary School** @HallingSch · Oct 11

🚗 🌻 Thank you for all your generous Harvest donations which @CaringHandsUK have just collected for the homeless. 🌻 🚗 @AletheiaAT



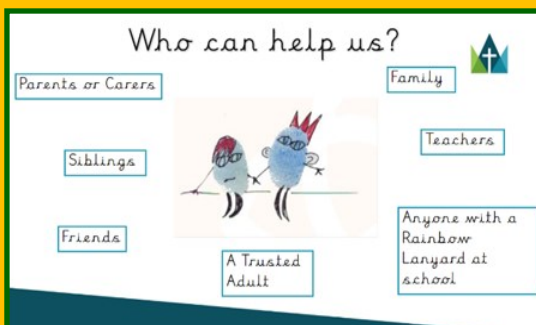
# World Mental Health Day!

World Mental Health Day was on **Thursday 10<sup>th</sup> October** and Mrs Crittall held an assembly on 'What is Mental Health' and how we can support, not only ourselves, but our friends and families too.

Mrs Crittall asked us to Rally Robin with our shoulder partners to see if we could name some of the **emotions** we could feel throughout the day both at school and at home..



We watched an animation video on what Mental Health is and how it can be shown throughout the day. If you would like to watch this with your child here is the link: [https://youtu.be/oz1S66\\_pYTww](https://youtu.be/oz1S66_pYTww). We enjoyed watching this and then we had the chance to talk to the children around us, about how we were feeling.



'Who can help us?' both at school and at home was a big topic of discussion and a lot of ideas came up about how we can share our feelings too.



At Halling, we use our **Reflective Toolkit** to work through our feelings and a **Restorative Approach** to look at how we can deal with our **emotions** when they show. Mrs Crittall found a song to go along with our **Little Spot of Emotions** characters: <https://youtu.be/0076ZF4jg3o>. It is a lot of fun to watch and sing! Miss Bright is going to be teaching us to sing this during our weekly singing assemblies too.



We would like to say a massive thank you for the very kind **£250** donation from a set of parents to go towards Mental Health resources. We are putting this money towards new sets of our **Little Spot of Emotions** which will enable **every class** to have a set and be able to have them out on show. Thank you so much!



# Wear Red Day!

## Show Racism the Red Card

We are proud of our diversity at Halling, indeed, it is one of our Curriculum Drivers. At Halling, we do not tolerate racism in any way, shape or form.

This year, for the third time, we took part in Wear Red Day 2024. Thank you all so much for supporting this by wearing red as a public show of solidarity in making Britain a safer, more tolerant place to live.



Change Hearts. Change Minds. Change Lives.



# #WRD24

SHOW  
RACISM  
THE  
RED  
CARD

CELEBRATING  YEARS OF WEAR RED DAY

# Wear It Pink Day!

## A bit about us...

We're Breast Cancer Now. We're here to change the lives of people affected by breast cancer. How? By combining the power of research and support.

Our world-class researchers are working in labs across the UK and Ireland to create a world where the words "breast cancer" aren't met with fear. We're building a brighter future for everyone affected by breast cancer.

And because over 600,000 people are living with or beyond the disease, we're here with support for today, too. Our helpline, health information, and support services are here for you and your loved ones. Every step of the way.

We're the place to turn for anything and everything to do with breast cancer. Whatever you're going through. Whoever you are. We're here.

**Well done and thank you, everyone!**

**Together Halling Primary School raised £324.22 for 'Breast Cancer Now' from your generous donations.**

**WEAR IT PINK**

**BREAST CANCER NOW**  
The research & care charity

**Thank you for wearing pink to school to support this charity.**

**22.10.24**



**BREAST CANCER NOW**  
The research & care charity

**Breast Cancer Now** @BreastCancerNow · Oct 21

Replying to @HallingSch and @AletheiaAT

Thank you so much to everyone at Halling for supporting #WearItPink!



**Halling Primary School** @HallingSch · 1h

💖💖 Today, we are all wearing pink to school for #wearitpink for @BreastCancerNow - thank you for your generous donations at the gates! Watch this space for the Halling total. All @AletheiaAT schools are taking part in this. We can't wait for the grand total! 💖💖



💖 Well done to one of our Head Pupils and members of our Comms Team for leading today's assembly for #wearitpink2024 Did you know there are approx. 8,295 pupils and 1,100 staff in our @AletheiaAT . If everyone donated £1 and wore pink that would be a staggering £9,395 raised! 💖



# Kagan Update

Kagan continues to be a driving strategy for learning within our school. All classes continue to use it well within their lessons and our five core structures - Rally Robin, Rally Coach, Round Robin, Timed Pair Share and Stand Up, Hand Up, Pair Up - are fully embedded into lessons.

Class Builders and Team Builders are as important as the structures used in lessons to support learning - these take place weekly in classrooms (normally on a Tuesday) and encourage social skills, interaction with peers and help to bring a different element of fun to the classroom. Recent examples of class builders have been:

Year 6 - organising themselves into age order, without speaking

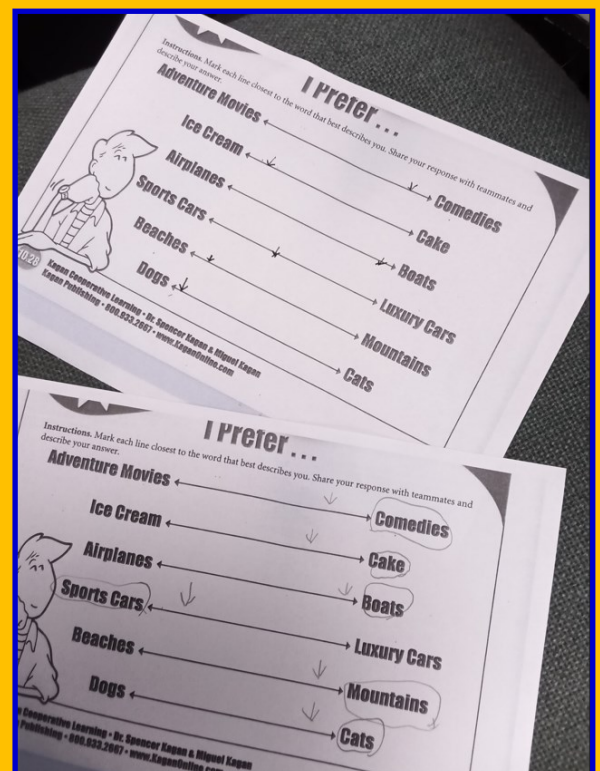
Year 4 - completing a 'prefer and compare' chart to see what similarities and differences you and your partner have

Year 2 - a game of musical statues

Cheer of the week is another element that the children continue to really enjoy. A staff poll goes out every Friday evening for the following week's cheer to be chosen which is then introduced in assembly on Mondays. Cheers are used to celebrate successes and good work in the classroom and in assemblies. We always share these on our social media (X) account. Recent cheers have included the 'sign language cheer' and 'cheese grater' - ask your children to show you how they are done!

More information about Kagan can be found on our school website - please visit the curriculum overview area for more details:

[Curriculum Overview: Broad and Balanced Syllabus](#)





# Halling's Head Pupils: 2024-2025



Hi, we are the new Head Pupils of Halling Primary School!

We want to achieve more Action Teams and make the school an even better place this year.

At Halling, we are good role models and we respect other people's ideas.

Watch this space for new ideas and new achievements at Halling!



**#teamhalling**





### KS2 Fruit Trolley!

A pupil voice 'Action Team' set up a healthy eating fruit and vegetable tuck shop for the children in Key Stage 2 - Years 3, 4, 5 and 6.



If your child is in one of these year groups and would like to buy a piece of fruit at morning break time, **all items cost 25p.**

**This will continue to run as long as there is demand!**

Please remember that we are a nut and seed-free school, thank you!



### Medicines and Creams

If your child needs to take **any form of medication** (including the application of creams/gels) whilst in school, a **form must be completed.**

Please pop into the office to complete this with Miss Bradley, Mrs Beeching or Mrs Carr-Taylor, so that we can ensure the medication is safely stored and administered/recorded/logged correctly.



Please may we take this opportunity to kindly request that all scooters and bikes continue to be 'walked' when on the school site.

This ensures that everyone is kept as safe as can possibly be during our busy drop-off and pick-up times!

**Thank you to all those who do 'walk' them!**



School drop-off and pick-up times are always exceptionally busy which is one of the reasons why we have members of staff stationed at the gates. Please do keep a close eye on toddlers who can easily get lost in the sea of parents and carers, as we cannot always guarantee that a member of staff will be on the main car park gate.

Thank  
you  
so  
much!



Please may we take this opportunity to kindly remind you that if you are driving onto the school site, the speed limit is 5mph at all times.

**Thank you!**

Unfortunately, we continue to receive complaints and photographs from residents in the local community who live in the roads closest to our school.

We also regularly receive complaints and photographs from parents and carers who continue to be highly concerned about the safety of Halling's children.

The school run is such a busy time and the roads closest to school always become heavily congested.

The complaints have been in respect of parents and carers parking inconsiderately on the kerb, grass verges and on/or blocking driveways. This has, in turn, forced pedestrians to walk on the road and there have been a few near misses.

**The last thing we want is for anyone to get hurt!**





# YEAR 4&5 NETBALL CLUB AT THE HOLMESDALE SCHOOL

An exciting opportunity to  
explore your netball skills,  
make new friends and  
experience sport and PE at  
The Holmesdale School

Wednesday 4:45-5:45  
All abilities welcome  
Free of charge

Scan the QR below to  
express an interest and  
receive further information



For more  
information,  
please contact  
[isabelle.prodger  
@swale.at](mailto:isabelle.prodger@swale.at)





Quite simply, Halling Primary School needs new members to continue and develop all the great things that our current PTA have started to develop.

Thank you to those parents who have stepped forward and already got themselves involved - your support is very much appreciated by all!

Halling's PTA continue to seek new members, if you are interested in joining and want to find out more, please don't hesitate to contact the PTA directly via email:

[PTA@halling.medway.sch.uk](mailto:PTA@halling.medway.sch.uk)

Join the PTA!



We continue to make great strides in working together with you all as parents and carers at Halling Primary School to make positive changes for everyone.

'Your Voice Matters' to us and we can only continue to make these changes if we know about them so thank you for your comments, suggestions and possible solutions when you feel we haven't quite got things right! Thank you also for your positivity when we do get things right - it means a lot!

If you should have any worries or concerns, your child's class teacher should be your first port of call. Should you then wish to speak to a member of the Senior Leadership Team please email the office to make an appointment with either Mrs Nott (Assistant Headteacher for KS2), Miss Eakins (Assistant Headteacher for KS1 & SENDCo), Mrs Coleman (EYFS Lead) or Ms Taylor (Headteacher).

You can, of course catch us on the gate too!

Our Complaints Policy can be found [here](#).

### PE/Sports Newsletter

Mr Harrison, along with the help of our pupils, has launched a PE/Sports Newsletter to showcase all of the amazing sporting achievements across the school.



Halling's  
Spectacular Sports  
Newsletter



The Newsletters are on our website and can be accessed by visiting: [Newsletters of Halling Primary School](#)

Watch this space...



# New Intake Tours 2025



**Halling**  
Primary School

## Daytime Tours - 09:45 -11:00

**2 adults and the new starter per slot (no siblings) 10 slots available**

Thursday 3rd October 2024

Thursday 10th October 2024

Thursday 17th October 2024

Thursday 7th November 2024

Thursday 14th November 2024

Thursday 21st November 2024

Thursday 28th November 2024

## Evening Tours - 17:00 - 18:00

**2 adults and the new starter per slot (no siblings)  
10 slots available**

Thursday 5th December 2024

Thursday 12th December 2024

To book a tour,  
please contact  
us on:  
**01634 240 258**

## Story Time Sessions - 14:45 - 15:00

**1 adult and 1 child per slot - 10 slots available**

Friday 4th October 2024

Friday 11th October 2024

Friday 18th October 2024

Friday 8th November 2024

Friday 15th November 2024

Friday 22nd November 2024

Friday 29th November 2024



## Attendance and Punctuality

In order to reduce the number of children arriving late for school in the morning, we thought it would be another good opportunity to remind you of the following points:

- Pupils must arrive in school by **08:50** on each school day.
- The register for the first session will be taken from 08:45 and will be kept open until 08:50.
- A pupil who arrives late via the office (after the register has closed at 08:50) but before 09:00, will be marked as late, using the L code.
- A pupil who arrives after 09:00 will be marked as late or absent, using the U code (unauthorised).

[Please do read our Attendance Policy on our website here.](#)





# Is Your Child Missing Out?

The school could be missing out on funding of up to £1,455 per year to help further support your child!

## What is Pupil Premium?

Pupil Premium is a grant given out to schools for each child, from a family on low income. The school uses it to plan and support learning opportunities for these children.

## Do you receive any of the following?

- Income support
- Income-based Jobseekers allowance
- Child Tax Credit only, with income less than £16,190
- The guarantee element of Pension Credit
- Income-related Employment and Support Allowance
- Asylum Seekers Support
- Working Tax Credit
- Universal Credit

**Apply now!**



To apply online visit:  
<https://www.kent.gov.uk/education-and-children/schools/free-school-meals> or if you would like help with your application, please visit the office who will assist you.





**HALLING**  
Primary School

# The Safeguarding Team

Halling Primary School is committed to safeguarding and promoting the welfare of children.  
We require all staff, volunteers and visitors to share this commitment.

If you are concerned about the safety of any child in our school, or a member of staff or volunteer,  
**YOU MUST** report it to one of our Designated Safeguarding Team.

## The Designated Safeguarding Team are:



**Ms Shona Eakins**  
ASSISTANT HEADTEACHER,  
SENDCo & DSL



**Mrs Rachel Crittall**  
PASTORAL LEAD (MATERNITY COVER)  
& DSL



**Ms Lisa Taylor**  
HEADTEACHER & DSL



**Mrs Ellie Rott**  
ASSISTANT HEADTEACHER & DSL



**Mrs Claire Coleman**  
EARLY YEARS LEAD & DSL

Disclosures from pupils are referred to the designated adult responsible for Safeguarding.

All cause for concerns must be made via Halling's online reporting system: CPOMs.

If you believe that a child is at risk of immediate significant harm, please contact the DSL or DDSLs directly. An acknowledgment will be made.

Please note: all referrals must initially go through **Ms Shona Eakins** or **Mrs Rachel Crittall** (in Ms Eakins' absence). The Senior Leadership Team and Safeguarding Team will have responsibilities regarding children under Social Services or with Child Protection issues.



September 2024

We have an email account that has been set up specifically for safeguarding emails:

[safeguarding@halling.medway.sch.uk](mailto:safeguarding@halling.medway.sch.uk)

This email account is monitored daily by the DSL, Ms Shona Eakins and the DDSLs, Mrs Rachel Crittall and Ms Lisa Taylor.



# Halling Primary School

Need a space for your  
club or event?

## Availability

**School hall available  
weekdays from 6pm.**

**On weekends, the hall  
is available all day.**

**At Halling Primary School, our school hall is available for parties at  
just £60 for 4 hours.**

**If clubs wish to hire the hall, this is at a cost of £16 per hour.**

**We also have the field available for £10 per hour.**



**For more information, or to hire our  
facilities, please contact :**

**[finance@halling.medway.sch.uk](mailto:finance@halling.medway.sch.uk)**

# 2024-2025 Term Dates



## TERM DATES: 2024 - 2025

Term 1	Tuesday 3 <sup>rd</sup> September – Tuesday 22 <sup>nd</sup> October 2024
Break	Wednesday 23 <sup>rd</sup> October – Friday 1 <sup>st</sup> November 2024
Term 2	Monday 4 <sup>th</sup> November – Friday 20 <sup>th</sup> December 2024
Break	Monday 23 <sup>rd</sup> December 2024 – Monday 6 <sup>th</sup> January 2025
Term 3	Tuesday 7 <sup>th</sup> January – Friday 14 <sup>th</sup> February 2025
Break	Monday 17 <sup>th</sup> February – Friday 21 <sup>st</sup> February 2025
Term 4	Monday 24 <sup>th</sup> February – Friday 4 <sup>th</sup> April 2025
Break	Monday 7 <sup>th</sup> April – Monday 21 <sup>st</sup> April 2025 Good Friday – 18 <sup>th</sup> April 2025, Easter Monday – 21 <sup>st</sup> April 2025
Term 5	Tuesday 22 <sup>nd</sup> April – Friday 23 <sup>rd</sup> May 2025 Bank Holiday – Monday 5 <sup>th</sup> May 2025
Break	Monday 26 <sup>th</sup> May – Friday 30 <sup>th</sup> May 2025
Term 6	Monday 2 <sup>nd</sup> June – Wednesday 23 <sup>rd</sup> July 2025

## SCHOOL STAFF DEVELOPMENT DAYS & TRUST DAYS (CHILDREN DO NOT ATTEND)

Monday 2<sup>nd</sup> September 2024  
 Wednesday 23<sup>rd</sup> October 2024  
 Monday 6<sup>th</sup> January 2025  
 Friday 14<sup>th</sup> March 2025  
 Monday 7<sup>th</sup> July 2025